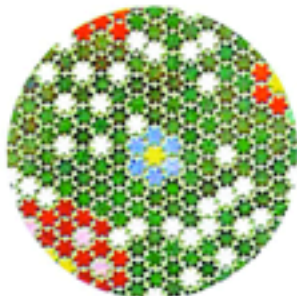


BATHROOMS

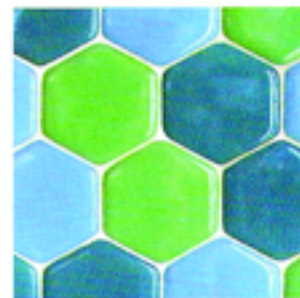
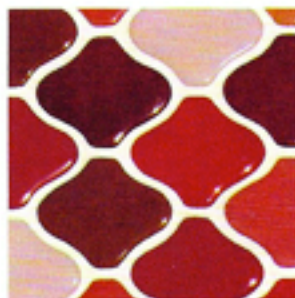
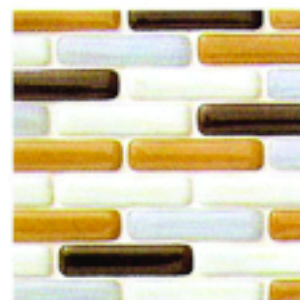
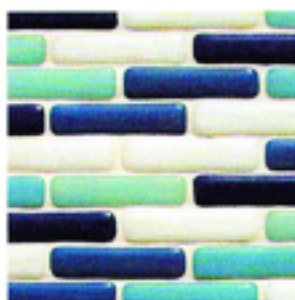
**PixALL Allegra Aluminum,
Petites Fleurs**
By Sicis
sicis.com



In any area where there's lots of water and it's going to be slippery, go with smaller tiles because the grout joints between them will give you better traction. Pay attention to tile size and the recommended grout-joint size, too, so that you don't have to cut tiles.

Margarita McGrath,
norooof Architects

Field Blend Tiles
By Stardust Glass
stardustglasstile.com



Hex Arrow
By Popham Design
pophamdesign.com

